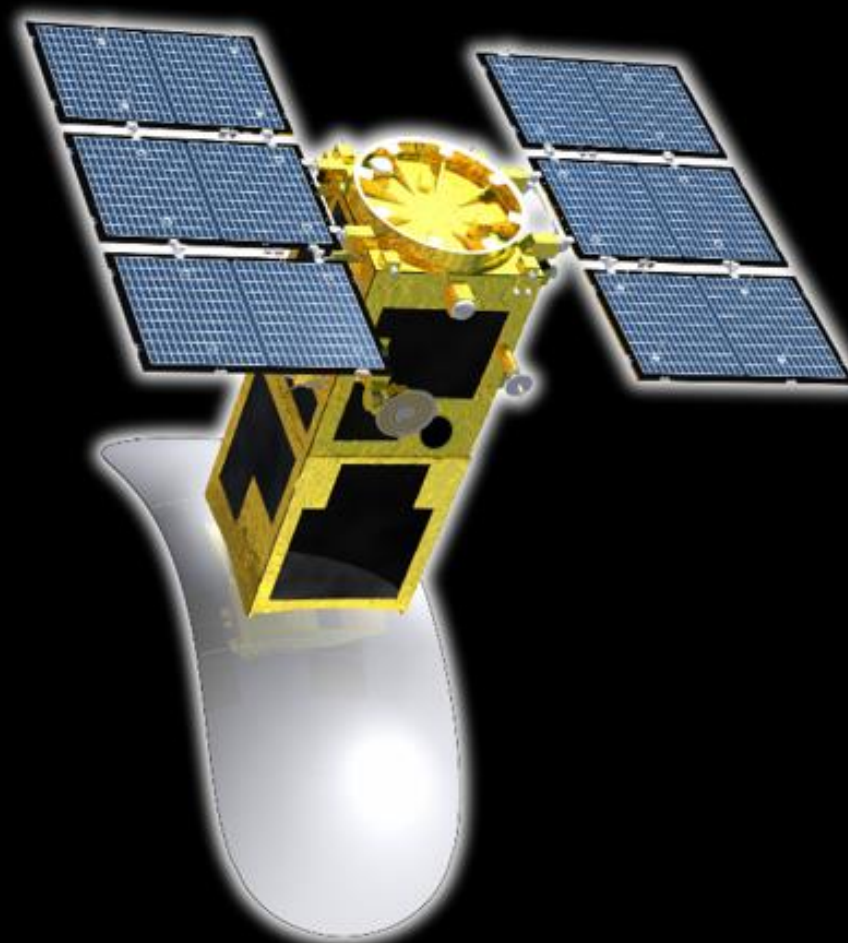


# ASNARO-2

## Japanese High Resolution X-band Radar Satellite

© NEC Corporation



Band (Frequency)	X-band (9.65 GHz)				
Mass	570kg				
Polarization	Selectable VV or HH				
Revisit Time	14 days	Ascending node equatorial crossing time	18:00 (Local Time)		
Acquisition Mode	Resolution (Azimuth x Range)*		Scene Size*	Off-nadir Angle	
	Level 1.1 (Single Look Complex)	Level 1.5 (Geo-reference/Geo-coded)			
	SPOTLIGHT-1	1.0 x 1.0 m	1.0 x 1.0 m	10 x 10 km	15-45 deg
	SPOTLIGHT-2	1.0** x 1.0 m	1.0 x 1.0 m	10 x 10 km	15-45 deg
	STRIPMAP	2.0 x 2.0 m	2.0 x 2.0 m	12 x 12 km	15-45 deg
SCANSAR	16.0 x 16.0 m	16.0 x 16.0 m	50 x 50 km	15-45 deg	

\*at 35deg off-nadir angle \*\*theoretical value: 0.5m

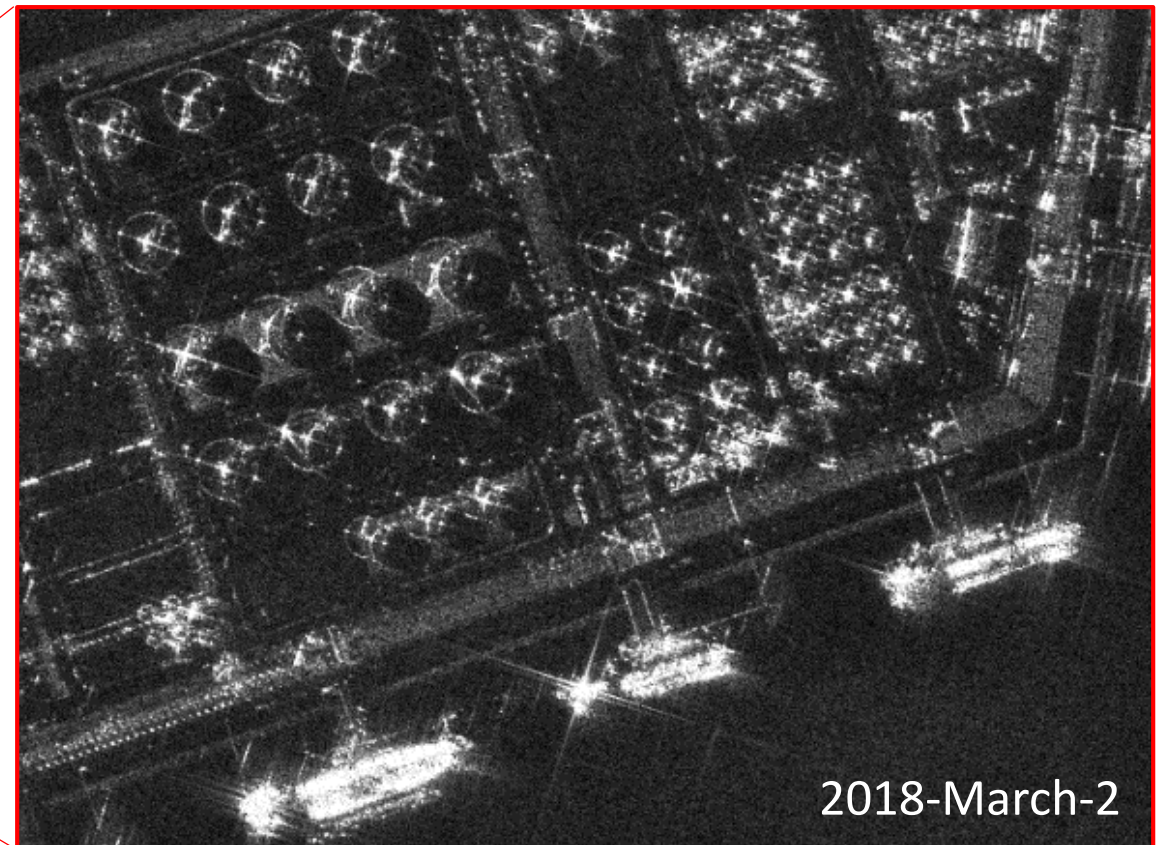
More Info at [www.jeoss.co.jp](http://www.jeoss.co.jp)



# ASNARO-2 images

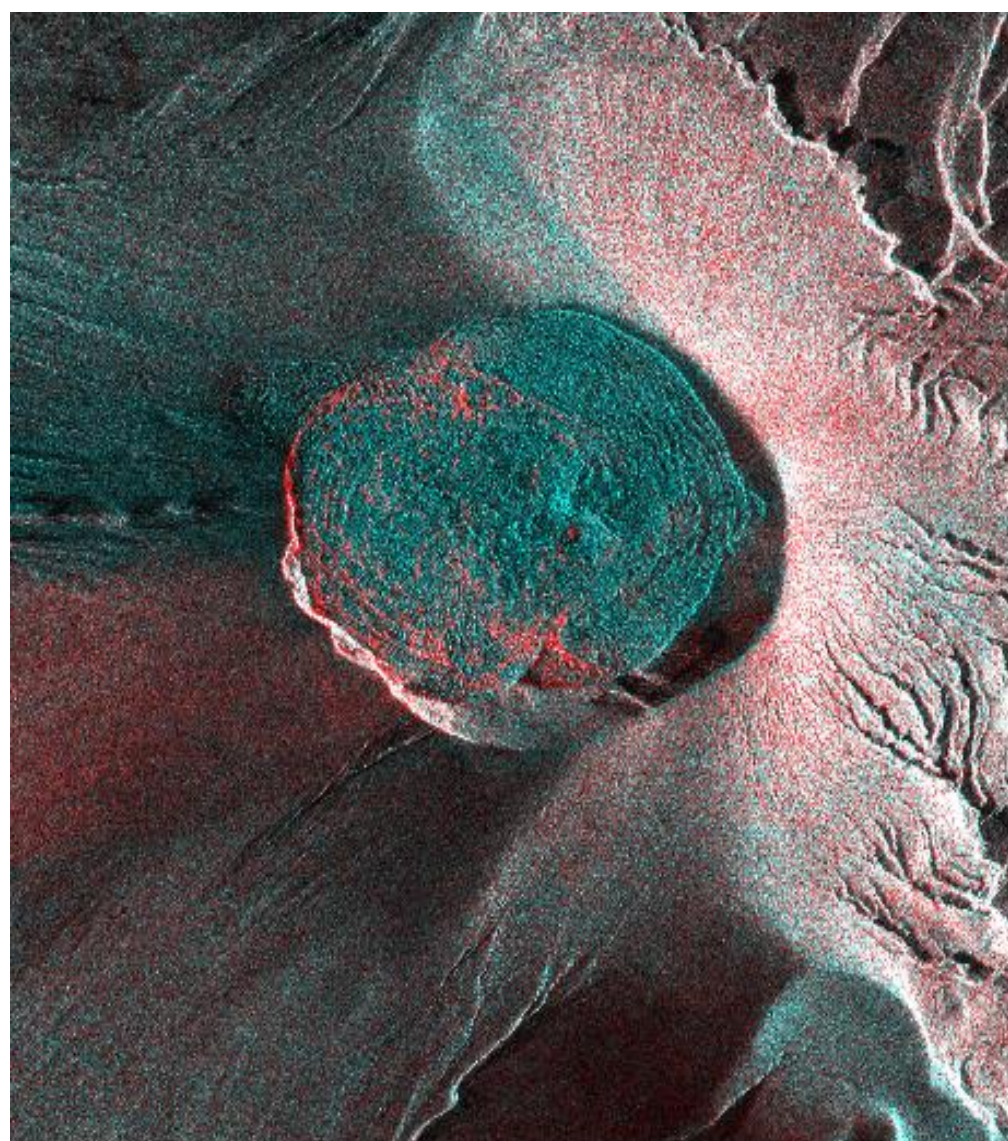


Port of Rotterdam/SPOTLIGHT-2

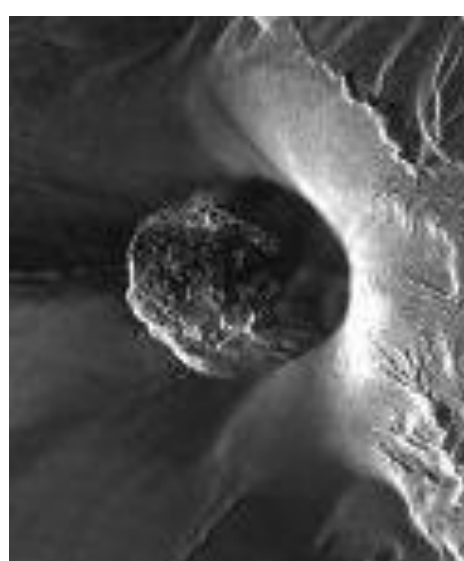


Port of Rotterdam/SPOTLIGHT-2

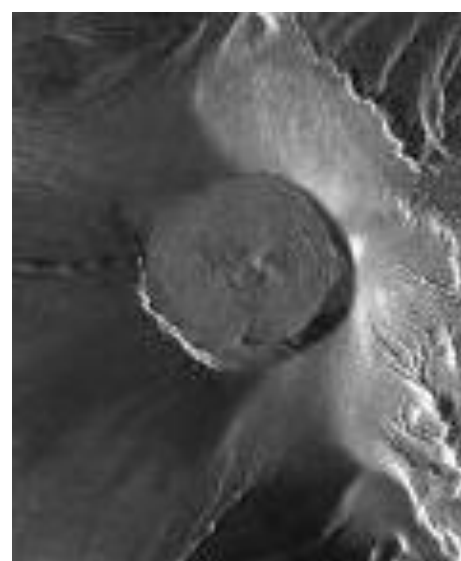
# Change Detection of ASNARO-2



Shinmoe-dake(Volcano) in Japan/SPOTLIGHT-2



2018-March-4



2018-March-18

© NEC Corporation



ASNARO-2 Image ©NEC,  
Multi Temporal Coherence mapping (MTC) processed by ©RESTEC